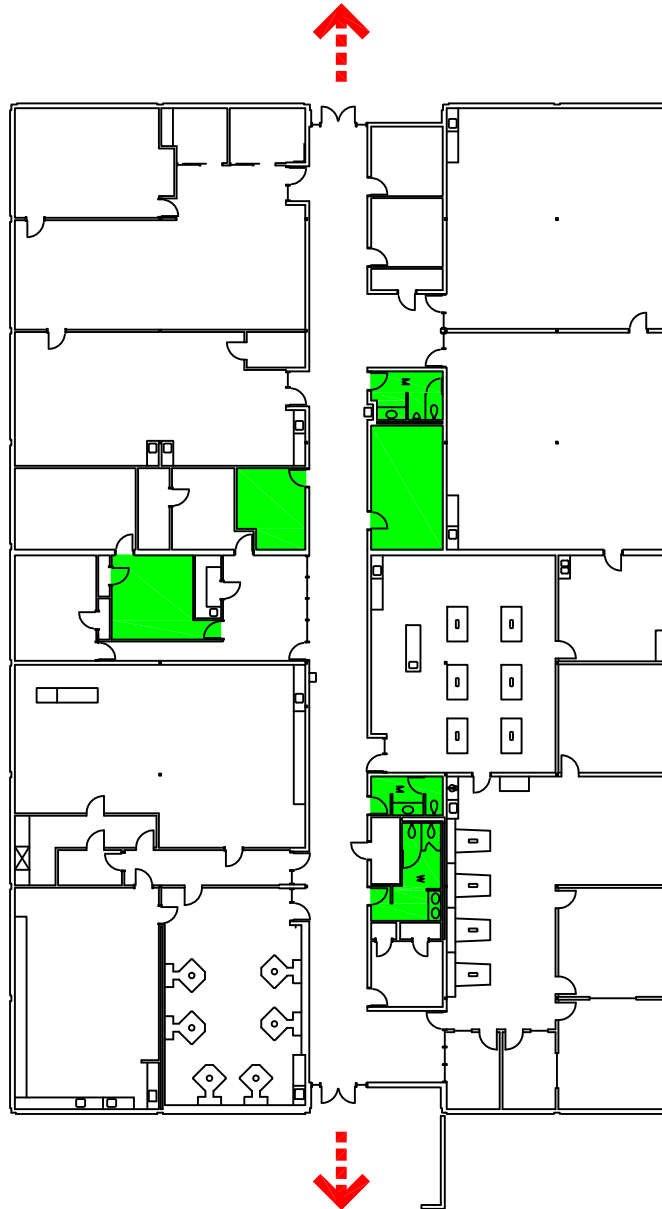


## IN CASE OF FIRE

LEAVE BUILDING THROUGH  
THE NEAREST EXIT AND REMAIN A  
SAFE DISTANCE AWAY  
UNTIL ALL IS CLEAR

## IN CASE OF HIGH WIND

MOVE TO THE LOWEST LEVEL  
OF THE BUILDING AND REMAIN IN AN  
INNER SPACE WITHOUT WINDOWS  
UNTIL ALL IS CLEAR



NORTH

## BLDG. 412 / SCIENCE AND TECHNOLOGY - EVACUATION PLAN

DATE: 4/8/15

FILENAME: 412FEP