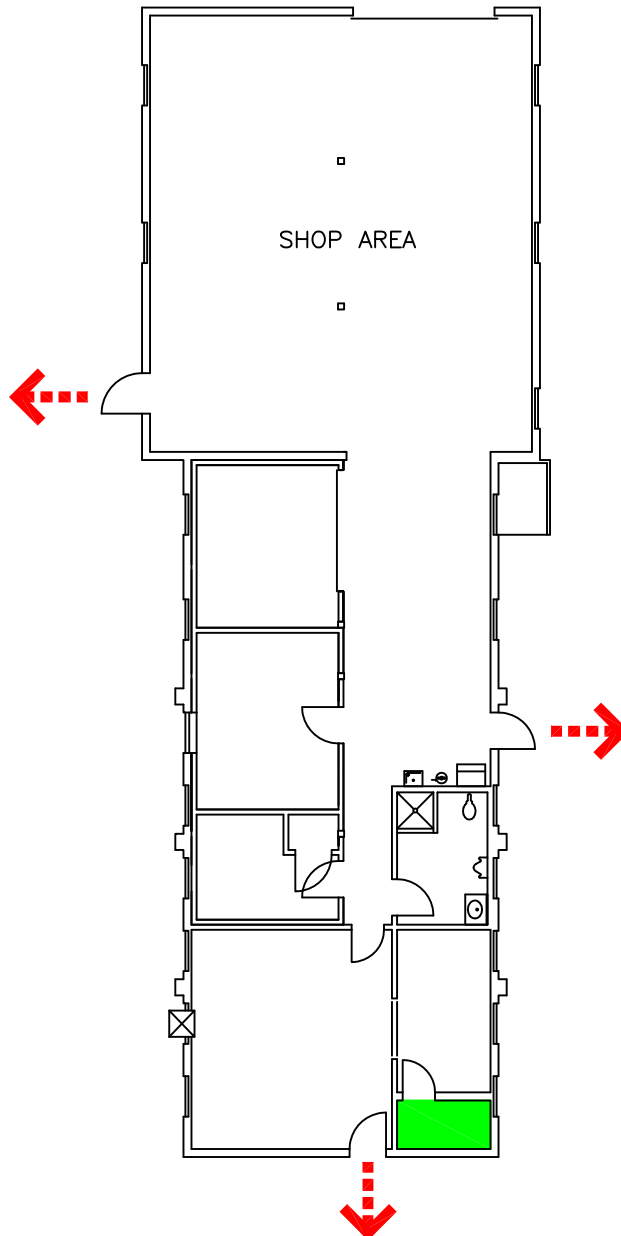


## IN CASE OF FIRE

LEAVE BUILDING THROUGH  
THE NEAREST EXIT AND REMAIN A  
SAFE DISTANCE AWAY  
UNTIL ALL IS CLEAR

## IN CASE OF HIGH WIND

ENTER THE LOCKSMITH VAULT  
LOCATED AT THE SOUTH END OF  
THE BUILDING REMAINING THERE  
UNTIL ALL IS CLEAR



NORTH

**BLDG. 419 / PHYSICAL PLANT MAINTENANCE - EVACUATION PLAN**

DATE: 4/8/15

FILENAME: 419FEP