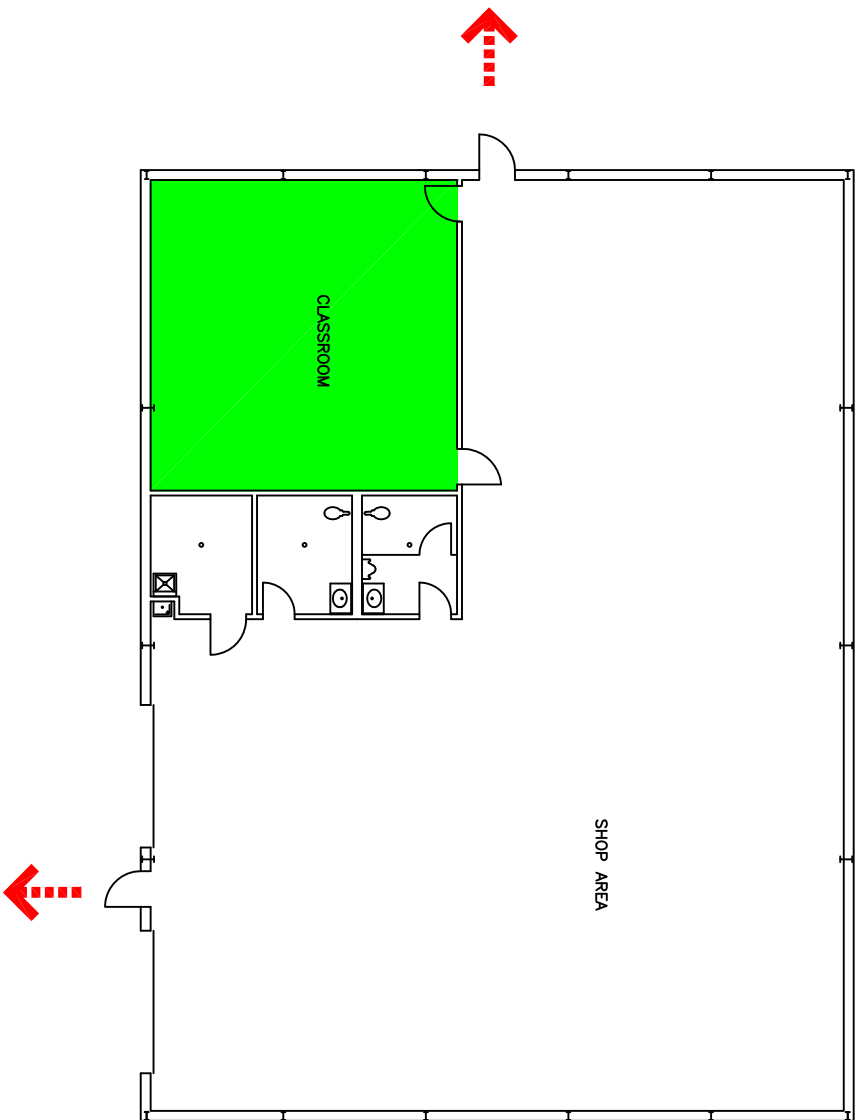


IN CASE OF FIRE

LEAVE BUILDING THROUGH THE NEAREST EXIT AND REMAIN A SAFE DISTANCE AWAY UNTIL ALL IS CLEAR

IN CASE OF HIGH WIND

MOVE TO THE LOWEST LEVEL OF THE BUILDING AND REMAIN IN AN INNER SPACE WITHOUT WINDOWS UNTIL ALL IS CLEAR



NORTH

BLDG. 701 / HIGH VOLTAGE STORAGE - EVACUATION PLAN

DATE: 4/8/15

FILENAME: 701FEP